



25 BUCKSTONE WAY

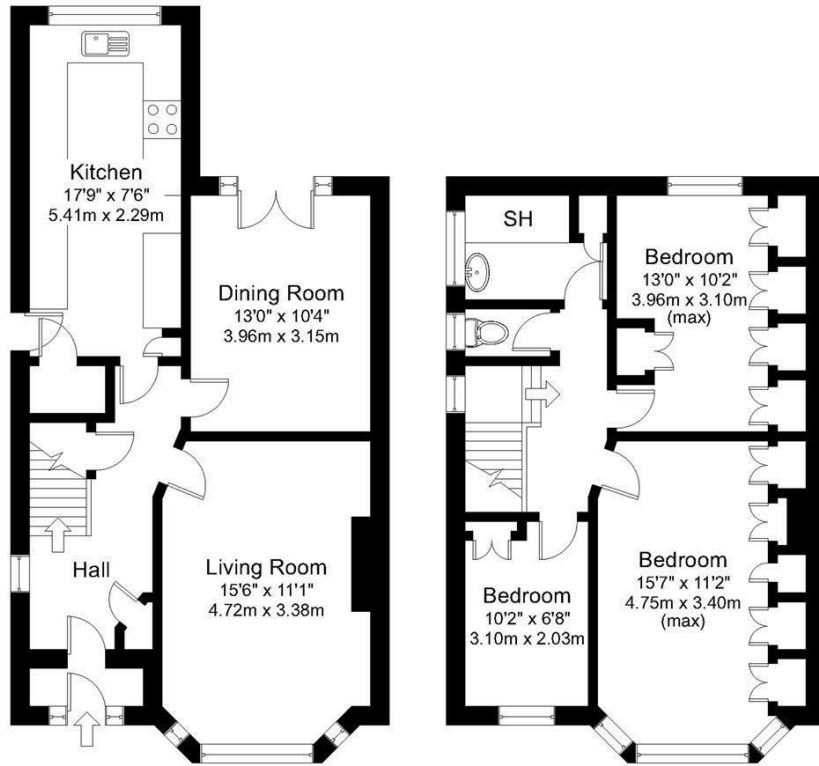
LEEDS, LS17 5HE

£375,000
FREEHOLD

Monroe is delighted to present this beautifully proportioned traditional home, which offers a wonderful blend of character and functional living. With a gross internal floor area of approximately 1,068 sq. ft., this property would be ideal for a growing family.

MONROE

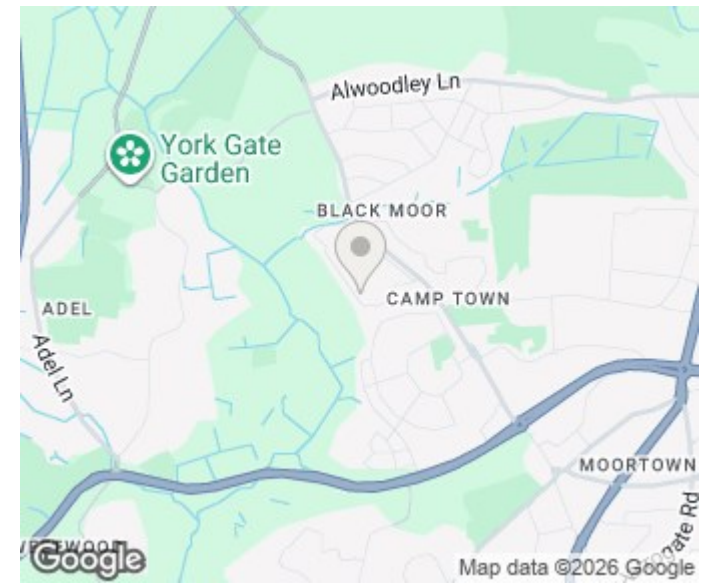
SELLERS OF THE FINEST HOMES



Ground Floor

First Floor

Gross internal floor area (approx.): 99.2 sq m (1,068 sq ft)
 For illustrative purposes only. Not to Scale. Copyright © Zenith Creations.



Energy Efficiency Rating		Current	Potential
Very energy efficient - lower running costs			
(92 plus) A			
(81-91) B			
(69-80) C			
(55-68) D		71	83
(39-54) E			
(21-38) F			
(1-20) G			
Not energy efficient - higher running costs			
England & Wales		EU Directive 2002/91/EC	

Agents Note: Whilst every care has been taken to prepare these particulars, they are for guidance purposes only. All measurements are approximate and are for general guidance purposes only and whilst every care has been taken to ensure their accuracy, they should not be relied upon and potential buyers/tenants are advised to recheck the measurements

Alwoodley Sales
 716 King Lane Alwoodley
 Leeds
 West Yorkshire
 LS17 7BA

0113 870 4443
 hello@monroestateagents.com
 www.monroestateagents.com

MONROE

SELLERS OF THE FINEST HOMES